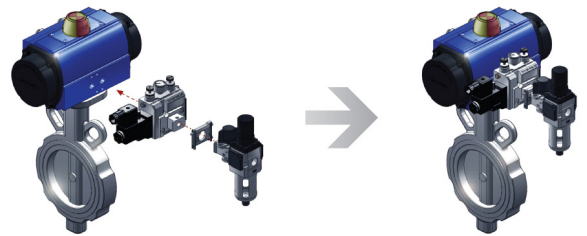


YOON SOL (NAMUR SOLENOID VALVE)



Connected filter regulator, exhaust valve, shut off valve, etc. of domestic and foreign pneumatic equipment manufacturers with manufacturer's connection part joint, not with elbow or middle piping.

Reduced working time thank to easy way of fixing and secured clean and neat appearance and easy maintenance and repair.



An exclusive pressure gauge being mounted on the body of the valve, recommended pressure for actuator and the pressure when the air is supplied to actuator are shown to be checked real-time.

A silencer is mounted to reduce exhaust-noise

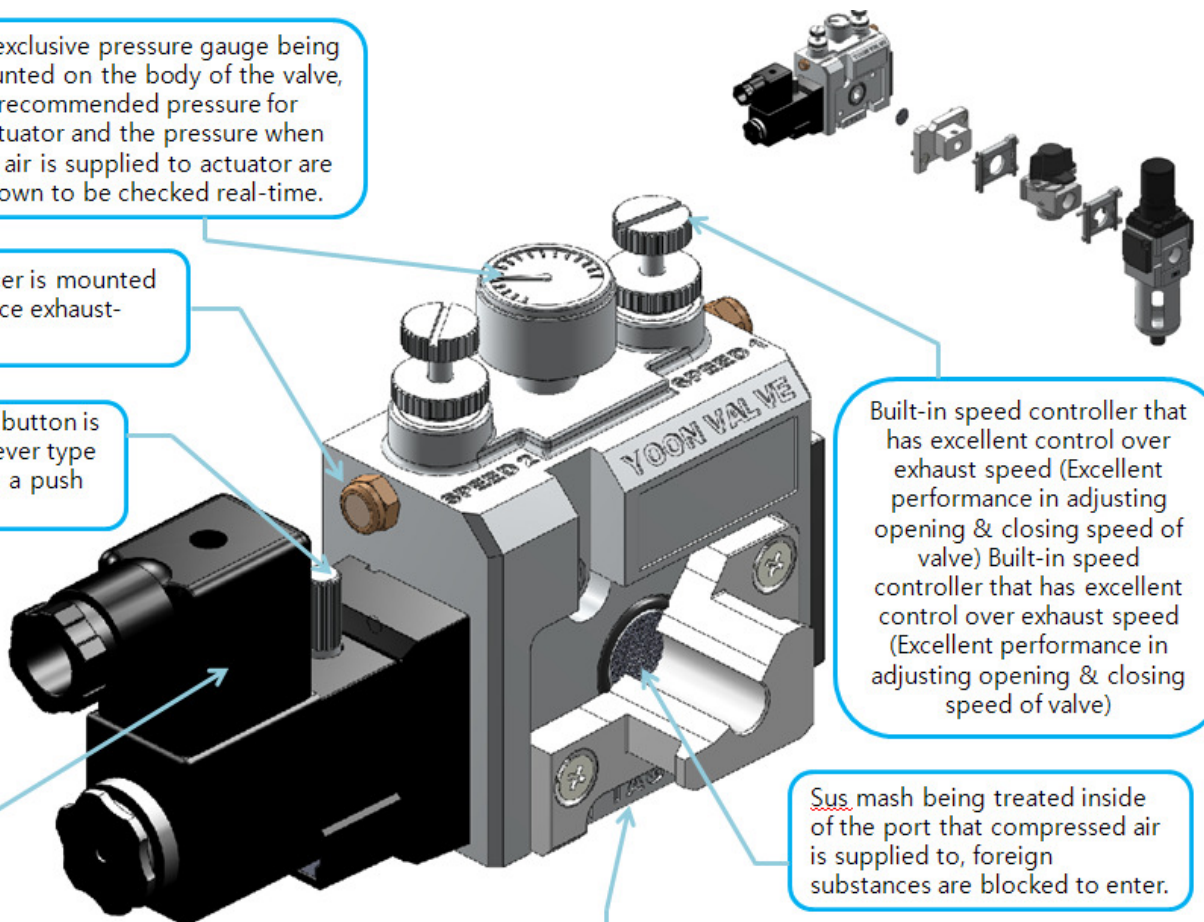
Manual control button is designed as a lever type (locking), not as a push button type.

Low power consuming lamp connector is adopted as a standard specification

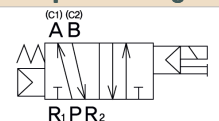
A hole to hang a valve management identification tag on the bottom of the valve body

Built-in speed controller that has excellent control over exhaust speed (Excellent performance in adjusting opening & closing speed of valve) Built-in speed controller that has excellent control over exhaust speed (Excellent performance in adjusting opening & closing speed of valve)

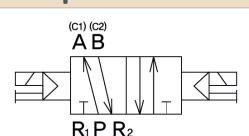
Sus mash being treated inside of the port that compressed air is supplied to, foreign substances are blocked to enter.



2- position single



2- position double



Contact us for the most recent product and technical information.

Visit our website for more details: <http://www.kosaplus.com>

Common Specifications	
Valve and solenoid type	Pilot operated soft spool
Working fluid	Compressed clean air
Max. working pressure	10.0 (Bar)
Min. working pressure	Single 1.5 Bar
	Double 1.0 Bar
Ambient temperature	- 5~ 60℃
Fluid temperature	- 5~ 60℃
Lubrication	Not required, Use turbine oil type.
Protection structure	IP65
Working environment	Not to be subject to corrosive gas

Electric specifications			
Rated voltage	110V, 220V(50Hz/60Hz)	AC	
	24V	DC	
Rated voltage fluctuation range	- 15%~ +10%		
Holding current	AC110V	0.04A	
	AC220V	0.02A	
	DC24C	0.1A	
Power consumption	AC110V	Apparent electric power	4.5VA
	AC220V		
	DC24C	Consumption of electrical power	2.5W
Surge absorber	Lamp connector (standard)		

Model code												
YN	S	1	-	02	T	-	L	G	S2	-	4	DZ
	(a)	(b)		(c)	(d)		(e)	(f)	(g)		(h)	(i)

Driving method	S	Solenoid Operated (*)
	A	Air Operated
Position	1	2- Position Single (*)
	2	2- Position Double
Port size	01	PT(Rc) 1/8"
	01N	NPT 1/8"
	02	PT(Rc) 1/4" (*)
	02N	NPT 1/4"
Connection type with regulator	T	T type (TPC)
	S	S type (SMC)
Manual override	L	Lever override (*)
	P	Push button
Pressure gauge	G	Pressure Gauge (*)
	B	None
Drain option	S1	Silencer (G1/4)
	S2	Speed controller (*)
	B	None
Voltage	2	DC24V
	3	AC110V
	4	AC220V
Electric connection	G	Grommet lead wire with light
	D	DIN connector
	DZ	DIN connector with light (*)



Contact us for the most recent product and technical information.

Visit our website for more details: <http://www.kosaplus.com>

